




Epidemiological profile of women with breast cancer treated at an oncology specialty clinic in southern Brazil

Irismar da Silva Martins do Carmo¹ , Michele Aparecida de Lima Maligeski Lemes^{1*} , Kelser de Souza Kock¹ 

ABSTRACT

Introduction: Breast cancer is the most common cancer in women, with increasing incidence and proportionally higher mortality in low- and middle-income countries. Delays in diagnosis and treatment are associated with worse outcomes. **Objective:** To analyze the epidemiological profile of women with breast cancer treated at an oncology clinic in the southern region of the state of Santa Catarina, in 2022. **Methods:** This is a cross-sectional study with 422 patients ≥ 18 years old, diagnosed with malignant breast neoplasm. Medical record data included age, laterality, histological type, time between diagnosis and surgery, lymph node involvement, metastasis, and treatment. Statistical analyses were performed using SPSS 20.0, with the significance level set at 5% ($p < 0.05$). **Results:** The mean age was 51.5 years, with a predominance of the 40–59 age group (56.6%) and incidence in the left breast (52.1%). Invasive breast carcinoma and subtypes accounted for 98.8% of cases, with emphasis on those unspecified (47.4%) and human epidermal growth factor receptor 2–positive (HER2+; 25.8%). The median time between diagnosis and surgery was 5.2 months (interquartile range: 2.3–8.1). Affected lymph nodes were associated with longer time to surgery and increased risk of metastasis (odds ratio: 42.30; 95% confidence interval: 10.05–178.02). All patients underwent surgery, with 363 (86.0%) receiving chemotherapy, radiotherapy, and surgery associated with new therapies (CT + RT + surgery + novel therapies). Other treatments included CT + surgery (10.2%), RT + surgery (1.7%), and surgery alone (2.1%). **Conclusion:** A predominance of invasive carcinomas was observed, with diagnosis occurring during productive age, and significant delays in access to surgical treatment. A strong association between positive lymph nodes and metastasis was identified. The significant proportion of patients with access to new therapies reflects the incorporation of oncological advances in the regional public health service, although the observed delays highlight the need to optimize care flows.

KEYWORDS: breast neoplasms; breast cancer; delayed diagnosis; lymph nodes; neoplasm metastasis.

INTRODUCTION


Breast cancer is the most common malignant tumor in women worldwide, with over 2 million new cases annually and increasing incidence in virtually all regions, although mortality is proportionally higher in low- and middle-income countries, where diagnosis is later and access to treatment is limited. In 2020, there were approximately 2.3 million new cases of breast cancer and 685,000 deaths worldwide. Projections indicate 2.64 million cases and up to 1.7 million deaths in 2030 if the current trend continues¹. The standardized incidence reaches 66.4/100,000 women in developed countries and 27.3/100,000 in developing countries, but mortality is proportionally higher in the latter, due to late diagnosis and limited access to treatment¹. In 2023, breast cancer

was already the most common cancer in 157 of 185 countries and responsible for approximately 670,000 deaths, according to recent estimates from the World Health Organization². In Brazil, reviews show a continuous increase in cases over the last decade, with breast cancer as the leading malignant neoplasm and the main cause of cancer death in women^{3,4}.

Globally, less than 10% of cases are attributable to high-penetrance germline mutations, especially BRCA1 and BRCA2, while most result from a combination of hormonal, reproductive, environmental, and lifestyle factors^{5,6,7}. Advanced age, early menarche, late menopause, nulliparity or late first pregnancy, family history, and high mammographic density are well-established risk factors^{5,6,7,8}. Among modifiable factors, the evidence is consistent for obesity/

¹Universidade do Sul de Santa Catarina, Medical College – Tubarão (SC), Brazil.

*Corresponding author: michele.maligeski@gmail.com

Editor: René Aloisio da Costa Vieira 

Received on: 01/09/2026. Accepted on: 03/02/2026. Published on: 05/06/2026.

How to cite: do Carmo ISM, Maligeski MAL, Kock KS. Epidemiological profile of women with breast cancer treated at an oncology specialty clinic in southern Brazil. *Mastology*. 2026;36:e20250062. <https://doi.org/10.29289/2594539420250062>

overweight (especially post-menopause), alcohol consumption, physical inactivity, smoking, unhealthy diet, and prolonged use of menopausal hormone therapy; regular physical activity, adequate weight, reduced alcohol consumption, and prolonged breastfeeding reduce the risk^{4,5,6,7,9}. In Brazil, clinical profile reviews highlight that most diagnosed women are aged 50–69 years, many of whom are overweight and have a low socioeconomic status^{4,10}.

Mammography is the main screening method, with evidence of a 15%–40% reduction in mortality in organized programs⁸. Recent reviews describe an increasing global incidence, but a decrease in mortality in high-income countries, attributed to the combination of mammography and modern treatment^{5,6}. In Brazil, between 2014 and 2023, an increase in breast cancer prevalence was observed, and mammography coverage remains insufficient, with significant regional inequalities³. A national study (2015–2022) showed a worsening of delays between mammography requests and report release: a 2.89% reduction in exams released in less than 30 days and a 3.05% increase in reports exceeding 60 days, especially in 2020¹¹.

The BI-RADS system is standard for mammography reports and guides management:

- categories 1–2 return to routine screening;
- 3 requires follow-up in 6 months;
- 4–5 indicate the need for biopsy;
- 0 requires complementary imaging.

A Brazilian review of clinical-epidemiological profiles shows a high frequency of BI-RADS 5 among diagnosed women, indicating often late presentation with locally advanced tumors¹⁰. During the COVID-19 pandemic, the number of screening mammograms in Brazilian women aged 50–69 years fell significantly, with distinct impacts across regions; the Southeast concentrated more exams and cases, while the North presented the lowest volumes in all years evaluated^{12,13}.

Delays between diagnosis and the start of treatment worsen outcomes: international analyses show a progressive increase in mortality with just a few additional weeks of waiting⁶. In Brazil, studies using data from the Cancer Information System (SISCAN) and the ONCOLOGY PANEL reveal a trend of increasing staging at the time of diagnosis and a higher proportion of cases starting treatment after the legal deadline of 60 days, especially in regions with less access to services^{3,11,13}.

Treatment is multidisciplinary and depends on the stage and molecular subtype (Luminal A/B, human epidermal growth factor receptor 2 [HER2] enriched, triple negative)^{5,14}. The combination of surgery (conservative or mastectomy), radiotherapy, and systemic therapies (chemotherapy, hormone therapy, anti-HER2, immunotherapy) has allowed for a significant increase in survival, including in metastatic disease, but access to modern targeted therapies is still unequal in middle-income countries like Brazil^{3,5,14}. The South and Southeast regions have the highest

recorded incidence, greater use of mammography, and a higher concentration of specialized centers, but maintain high mortality rates; the North and Northeast combine low screening coverage, greater delays, and less infrastructure, resulting in more advanced diagnoses and a worse prognosis^{3,4,11,12,13}.

Based on this perspective, the objective of this study was to analyze the epidemiological profile of women with breast cancer followed up at a specialized oncology clinic in southern Santa Catarina in 2022.

METHODS

This study was epidemiological in nature, with a cross-sectional design. The study was conducted based on the analysis of medical record data from female patients, aged over 18 years, who underwent treatment for breast cancer and completed treatment. The data were collected from the oncology outpatient clinic database of Hospital Nossa Senhora da Conceição (HNSC), located in Tubarão, Santa Catarina, during the period of 2022. The institution receives patients from the AMUREL region (Association of Municipalities of the Laguna Region), which comprises 18 municipalities in Santa Catarina and 386,545 inhabitants, according to the 2022 census.

Patients seen at the oncology specialty outpatient clinic between January and December 2022, diagnosed with malignant breast neoplasm (International Classification of Diseases [ICD] C50) and over 18 years of age, were selected for this study. Patients with incomplete medical records or who were undergoing treatment were excluded.

For the sample size calculation, a 95% confidence interval ($Z_{\alpha/2}=1.96$), unknown prevalence ($p=q=0.5$), and a sampling error of 5% ($E=0.05$) were considered. The sample size was calculated using Equation 1, resulting in a total of 390 individuals.

$$n = \frac{Z_{\alpha/2}^2 \cdot p \cdot q}{E^2} \quad (1)$$

At the end of the data collection, 422 patients were included, exceeding the calculated minimum number by approximately 8%, which helps to compensate for any potential losses or exclusions and reinforces the statistical power of the study.

The data collection procedure was carried out using information obtained from the analysis of electronic medical records from the Philips Tasy system. Initially, the HNSC Information Technology team was asked for a report with the medical records that met the inclusion criteria. Subsequently, the cases were randomized and selected to compose the sample. The variables collected were age, lymph node and breast involvement (right/left), presence of metastasis, time between diagnosis and surgery, histopathological report, methods used in diagnosis, and treatment employed. The research was approved by the Research Ethics Committee under opinion number 6.572.209, on 04/12/2023.

The data were organized using Microsoft Excel and analyzed using the Statistical Package for the Social Sciences (SPSS) software, version 20.0 (IBM Corp., Armonk, NY, USA). Quantitative variables were described using measures of central tendency and data dispersion, and categorical variables using absolute and percentage frequencies. The analysis of numerical data was primarily performed using the Kolmogorov-Smirnov normality test. For comparison between groups, variables were tested using Pearson's chi-square test. The level of statistical significance adopted was 5% (p-value <0.05).

RESULTS

The study sample consisted of 422 female patients over 18 years of age, as detailed in Figure 1. The sample profile indicated a mean age of 51.5 years (standard deviation ± 12.9). The majority (56.6%) were in the 40–59 age range, while 24.6% were ≥ 60 years old, and 18.7% were <40 years old. Regarding the affected breast, 52.1% of cases occurred in the left breast, 45.5% in the right breast, and 2.4% of patients presented with bilateral involvement.

Regarding histological types, only 5 (1.2%) corresponded to cases not classified as invasive breast carcinoma (IBC). This small group included 2 cases of adenocarcinoma (0.5%) and 3 cases of malignant phyllodes tumor (MPT) (0.7%).

The remaining 417 patients (98.8%) were classified as IBC or one of its subtypes. IBC without subtype specification was the most frequent, with 200 cases, representing 47.4% of the total sample and 48.0% of IBC cases. Following this, the IBC-HER2+ subtype (with HER2 overexpression) stood out, present in 109 patients (25.8% of the total; 26.1% of IBC).

Invasive ductal carcinoma (IDC) was identified in 62 cases (14.7% of the total; 14.9% of breast cancer), while Invasive Carcinoma

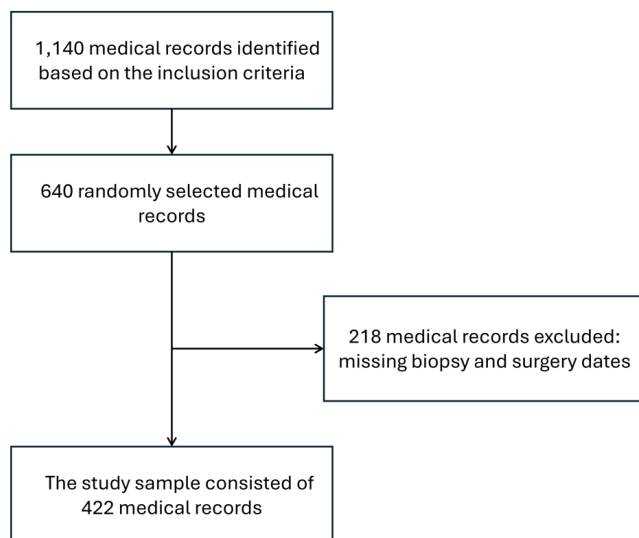


Figure 1. Flowchart of the sample selection of patients diagnosed with malignant breast neoplasm in an oncology specialty outpatient clinic in southern Santa Catarina in the year 2022.

of no Special Type (NST) occurred in 32 patients (7.6% of the total; 7.7% of breast cancer). Less frequently, 7 cases of invasive papillary carcinoma (IPC; 1.7%), 4 cases of poorly differentiated breast carcinoma (PDBC; 0.9%), and 3 cases of invasive lobular carcinoma (ILC; 0.7%) were observed.

All 422 patients underwent surgery as part of their cancer treatment. Of these, 363 underwent a regimen that included a combination of chemotherapy, radiotherapy, and surgery, associated with new therapies (CT + RT + surgery + novel therapies) — such as immunotherapy, targeted therapy, or hormone therapy. The remaining cases were distributed as follows:

- 43 patients underwent CT + surgery;
- 7 were treated with RT + surgery; and
- 9 underwent surgery only, without any adjuvant therapy.

The median time between diagnosis and surgery was 5.2 months, with an interquartile range of 2.3–8.1 months. When relating the time between diagnosis and surgical treatment, a significant association was observed between the presence of affected lymph nodes and a longer time to surgery, but, when compared with the presence of metastases, there was no statistical significance (Figure 2)

Risk analysis demonstrated a strong and significant association between lymph node involvement and the occurrence of metastasis. Patients with positive lymph nodes had approximately a 42 times greater chance of presenting with metastatic disease compared to patients without lymph node involvement (OR 42.30; 95%CI 10.05–178.02) (Figure 3).

DISCUSSION

The results demonstrated that most patients were in the 40–59 age range, with a slight predominance of left breast involvement. From a histological point of view, a clear predominance of CMI (Carcinoma Mamário Invasivo) and its subtypes was observed, representing 98.8% of the sample, with unspecified IBC and the HER2+ subtype being the most frequent. The median time between diagnosis and surgery was 5.2 months, longer than recommended in the literature, and was significantly associated with lymph node involvement. Risk analysis revealed that patients with positive lymph nodes had approximately a 42 times greater chance of developing metastasis. Regarding treatment, most patients underwent multimodal regimens, with a predominance of the triple combination of surgery + CT + RT, although access to novel therapies is still limited.

The average age found was 51.5 years (standard deviation ± 12.9), with 56.6% of patients in the 40–59 age range. This data is consistent with the literature, which places the peak incidence of breast cancer between 50–60 years of age^{14,15}. The high incidence among women still of reproductive age

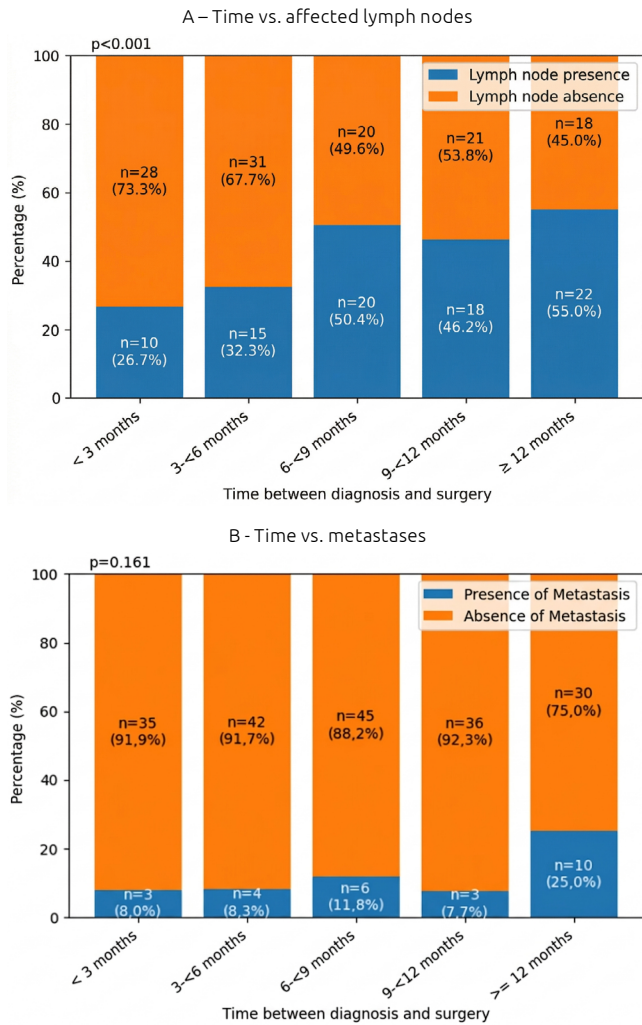


Figure 2. Time between diagnosis and surgical treatment in patients with malignant breast neoplasm in an oncology specialty outpatient clinic in southern Santa Catarina in 2022.

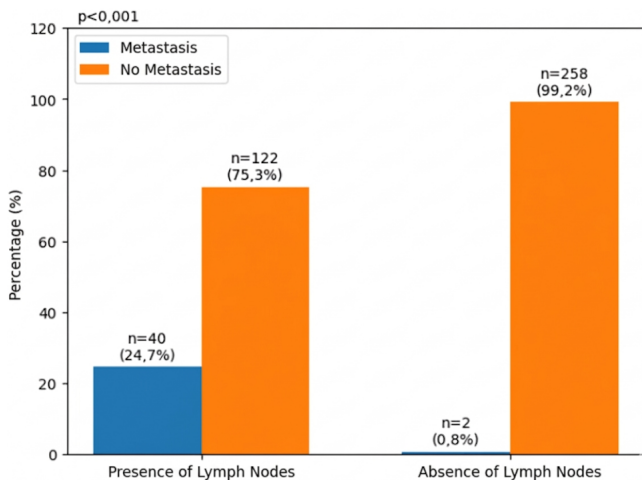


Figure 3. Association between lymph nodes and metastasis in patients diagnosed with malignant breast neoplasm in an oncology specialty outpatient clinic in southern Santa Catarina in 2022.

reinforces the need for public policies focused on organized screening and rapid access to diagnosis in this population. Regarding the affected breast, the left breast was predominantly affected (52.1%), a finding consistent with previous studies¹⁶ that associate left breast cancer with a more aggressive genomic profile and poorer therapeutic response. Although the difference is small, its recurrence in different populations suggests that biological or anatomical factors may influence the laterality of the disease.

Histological analysis revealed that only 5 patients (1.2%) presented types not classified as IBC, with 2 cases of adenocarcinoma and 3 cases of malignant phyllodes tumor (MPT). The remaining 417 cases (98.8%) were classified as IBC or its subtypes. Population studies, such as that of Moreira et al.¹⁷ have identified invasive ductal carcinoma (IDC) as the predominant type, accounting for approximately 66.8% of cases. In the present study, isolated IDC represented only 14.7%, suggesting that a significant portion of ductal cases may have been recorded under the heading “unspecified CMI”. If we consider the sum of unspecified IBC, IDC, and HER2+ IBC – all variants of ductal carcinomas in practice – the percentage rises to 88.0%, approaching the patterns described in the literature. This hypothesis is reinforced by the very organization of the data, in which the subtypes appear hierarchically linked to IBC. The presence of less common subtypes, such as invasive papillary invasive lobular carcinoma (ILC), papillary breast carcinoma (PBC) and invasive papillary carcinoma (IPC), even in small numbers, highlights the heterogeneity of the disease and the importance of precise anatomopathological characterization for prognostic and therapeutic definition.

The median time between diagnosis and surgery was 5.2 months, with an interquartile range of 2.3 to 8.1 months. This interval is substantially longer than that recommended by national and international guidelines. A recent meta-analysis quantified that each four-week delay in starting treatment increases the risk of death from breast cancer by more than 10.0%¹⁸. A Brazilian study using national data demonstrated that delays exceeding 60 days are associated with worse outcomes, especially in regions with a lower Human Development Index¹⁹. In multicenter cohorts, 80.5% of women started treatment within 60 days, with a median of 32 days²⁰.

The finding of 5.2 months in the present study is concerning and suggests barriers to access, fragmentation of the care pathway, or inefficiency in the regulation of surgical slots in the regional public health system. When relating surgical time to clinical variables, a significant association was observed between the presence of affected lymph nodes and a longer time to surgery, indicating that patients with more advanced disease may be facing even slower waiting times. When compared to the presence of metastases, there

was no statistical significance, possibly due to the smaller number of events or the severity of these cases, which may have different course.

Risk analysis demonstrated a strong and significant association between lymph node involvement and the occurrence of metastasis. Patients with positive lymph nodes had approximately a 42 times greater chance of presenting with metastatic disease compared to patients without lymph node involvement (OR 42.30; 95%CI 10.05–178.02). This finding is biologically plausible and consistent with the literature: lymph node involvement is one of the main predictors of systemic dissemination in breast cancer^{21,22}. As tumors progress, they use the lymphatic system as a route of dissemination, resulting in multiple tumor foci and a worse prognosis²¹. The magnitude of the association found reinforces the importance of early lymph node staging and the adoption of aggressive therapeutic strategies in this at-risk subgroup.

All 422 patients underwent surgery as part of their cancer treatment. The vast majority (363 cases; 86.0%) received a combination of chemotherapy + radiotherapy + surgery + neurotransmitter — such as immunotherapy, targeted therapy, or hormone therapy — indicating locally advanced or high-risk disease requiring a contemporary multimodal approach. The remaining cases were distributed as follows: chemotherapy + surgery in 43 patients (10.2%), radiotherapy + surgery in 7 patients (1.7%), and surgery alone in 9 patients (2.1%).

The significant number of patients with access to novel therapies reflects the progressive incorporation of modern therapeutic modalities into the service, in line with recent advances in the literature^{23,24}. Clinical studies with immunotherapy and targeted therapies have shown promising results, although access to them is still unequal in middle-income countries²⁴. The diversity of therapeutic regimens observed — from isolated CX to quadruple combinations — highlights the individualization of treatment, considering factors such as stage, molecular subtype, age, clinical conditions, and patient preference²⁵.

This study has limitations that should be considered when interpreting the findings. It is a cross-sectional study, which does not allow for establishing causal relationships, only

associations. The use of secondary data (electronic medical records) is subject to incompleteness, data entry errors, and lack of standardization, which may have affected the accuracy of some variables, especially in the classification of histological types, where a possible overlap was observed between the unspecified CMI category and its subtypes. Furthermore, the study was conducted at a single reference center in southern Santa Catarina, which limits the generalizability of the results to other regions of the country. 9+

CONCLUSIONS

In summary, the profile of women with breast cancer in southern Santa Catarina reveals a predominance of invasive carcinomas, diagnosis during productive age, significant delays in access to surgical treatment, and a strong association between lymph node involvement and metastasis. The longer-than-recommended time to surgery raises an alert regarding the need to optimize care flows and reduce regional inequalities in access to cancer treatment. Despite the observed delays, the significant proportion of patients with access to new therapies (363 cases; 86.0%) points to a significant incorporation of oncological advances in the regional public service, reflecting therapeutic updates and alignment with contemporary practices in breast cancer management.

ACKNOWLEDGEMENT

The authors thank the hospital for providing access to the medical record data used in this study, with due respect to ethical principles and the confidentiality of patient information.

AUTHORS' CONTRIBUTION

ISMC: Formal Analysis, Methodology, Project administration, Visualization, Writing – review & editing. MALML: Conceptualization, Formal Analysis, Methodology, Project administration, Visualization, Writing – review & editing. KSK: Data curation, Formal Analysis, Methodology, Project administration, Supervision, Visualization, Writing – review & editing.

Funding: none.

Conflict of interest: nothing to declare.

Artificial Intelligence usage: Artificial Intelligence was used solely for linguistic editing and proofreading to improve the clarity of the text. The final content was fully reviewed and approved by the authors, who remain responsible for the integrity of the research.

Data availability statement: The data that support the findings of this study are available from the corresponding author, MALM, upon reasonable request.

REFERENCES

- Shang C, Xu D. Epidemiology of breast cancer. *Oncologie*. 2022;24(4):649-63. <https://doi.org/10.32604/oncologie.2022.027640>
- Anton S, Lazan A, Grigore M, Ilea C, Scripcariu S-I, Popa S, et al. Current trends in breast cancer genetics, risk factors, and screening strategies. *J Biol Methods*. 2025;12(2):e99010054. <https://doi.org/10.14440/jbm.2025.0079>
- Handa LYS, Paiva LS, Sousa LVA. Análise epidemiológica dos protocolos de rastreamento e tratamento do câncer de mama no contexto brasileiro. *Clin Oncol Let*. 2025;5(1):e2025001. <http://doi.org/10.4322/col.2025.001>
- Cecilio AP, Takakura ET, Jumes JJ, dos Santos JW, Herrera AC, Victorino VJ, et al. Breast cancer in Brazil: epidemiology and treatment challenges. *Breast Cancer (Dove Med Press)*. 2015;7:43-9. <https://doi.org/10.2147/bctt.s50361>
- Łukasiewicz S, Czezelewski M, Forma A, Baj J, Sitarz R, Stanislawek A. Breast cancer – epidemiology, risk factors, classification, prognostic markers, and current treatment strategies. *Cancers (Basel)*. 2021;13(17):4287. <https://doi.org/10.3390/cancers13174287>
- Roheel A, Khan A, Anwar F, Akbar Z, Akhtar MF, Khan MI, et al. Global epidemiology of breast cancer based on risk factors: a systematic review. *Front Oncol*. 2023;13:1270473. <https://doi.org/10.3389/fonc.2023.1240098>
- Terry MB, Colditz GA. Epidemiology and risk factors for breast cancer: 21st century advances. *Cold Spring Harb Perspect Med*. 2023;13(9):a041317. <https://doi.org/10.1101/cshperspect.a041317>
- Winters S, Martin C, Murphy D, Shokar NK. Breast cancer epidemiology, prevention, and screening. *Prog Mol Biol Transl Sci*. 2017;151:1-32. <https://doi.org/10.1016/bs.pmbts.2017.07.002>
- Nascimento RG. Epidemiology and risk factors for breast cancer: a literature review. *Rev Cient Multidiscip Núcleo Conhecimento*. 2022;6(9):5-17. <https://doi.org/10.32749/nucleodoconhecimento.com.br/health/risk-factors>
- Roque B, Lima MEV, Bezerra RC, Santiago MB, Amorim CSV, da Costa RSL. Perfil epidemiológico e clínico de mulheres diagnosticadas com câncer de mama no Brasil. In: Marques NSF, da Costa RSL. *Ciências Biológicas e da Saúde: Pesquisas Básicas e Aplicadas*. Rio Branco: Stricto Sensu Editora; 2021. p. 198-212.
- Evangelista GS, Dutra MC. Câncer de mama no Brasil – prevalência entre 2014 e 2023 e a importância da mamografia no rastreamento. *Rev FT*. 2024;29(3):1-15. <https://doi.org/10.69849/revistaft/ni10202411301359>
- Luna ACM, Araújo AMM, Cardenas B, Moreira AL, Mendes IFL, Tizolim MR, et al. A epidemiologia do câncer de mama em Roraima. *Braz J Health Rev*. 2020;3(4):10570-82. <https://doi.org/10.34119/bjhrv3n4-319>
- Cunha UMM, Lucena KDT, Sousa LVA. Pandemia da COVID-19 e seu reflexo no rastreamento do câncer de mama no Brasil. *J Hum Growth Dev*. 2024;34(2):328-41.
- Smolarz B, Nowak AZ, Romanowicz H. Breast cancer – epidemiology, classification, pathogenesis and treatment. *Cancers (Basel)*. 2022;14(10):2569. <https://doi.org/10.3390/cancers14102569>
- Ferlay J, Colombet M, Soerjomataram I, Parkin DM, Piñeros M, Znaor A, et al. Cancer statistics for the year 2020: An overview. *Int J Cancer*. 2021;149(4):778- 89. <https://doi.org/10.1002/ijc.33588>
- Abdou Y, Gupta M, Asaoka M, Attwood K, Mateusz O, Gandhi S, et al. Left sided breast cancer is associated with aggressive biology and worse outcomes than right sided breast cancer. *Sci Rep*. 2022;12(1):13377. <https://doi.org/10.1038/s41598-022-16749-4>
- Moreira CN, Teixeira MLS, Domingues EM, da Silva CMF, Durães ATS, dos Santos VT, et al. Perfil clínico-epidemiológico e histológico do câncer de mama no estado da Bahia, no período entre 2011 e 2021. *Braz J Health Rev*. 2023;6(2):4711-25. <https://doi.org/10.34119/bjhrv6n2-022>
- Ungvari Z, Fekete M, Buda A, Lehockzi A, Munkácsy G, Scaffidi P, et al. Quantifying the impact of treatment delays on breast cancer survival outcomes: a meta-analysis. *Geroscience*. 2026;48(1):1173-87. <https://doi.org/10.1007/s11357-025-01719-1>
- de Lima DAN, Pelloso FC, Pereira ECA, Carvalho MDB, Camparoto CW, Ribeiro HF, et al. Delay in diagnosis and treatment of breast cancer: regional disparities. *Cancers (Basel)*. 2025;17(22):3612. <https://doi.org/10.3390/cancers17111892>
- Eriksson L, Bergh J, Humphreys K, Wärnberg F, Törnberg S, Czene K. Time from breast cancer diagnosis to therapeutic surgery and breast cancer prognosis: a population-based cohort study. *Int J Cancer*. 2018;143(5):1093-104. <https://doi.org/10.1002/ijc.31411>
- Luo M, Lin X, Hao D, Shen KW, Wu W, Wang L, et al. Incidence and risk factors of lymph node metastasis in breast cancer patients without preoperative chemoradiotherapy and neoadjuvant therapy: analysis of SEER data. *Gland Surg*. 2023;12(11):1508-24. <https://doi.org/10.21037/gs-23-258>
- Alvarenga CA, Santos M, Alvarenga M, Paravidino PI, Morais SS, Brenelli HB, et al. Localization of metastasis within the sentinel lymph node biopsies: a predictor of additional axillary spread of breast cancer? *Rev Bras Ginecol Obstet*. 2013;35(11):483-99. <https://doi.org/10.1590/S0100-72032013001100002>
- Neves GJG, Quevedo AL, Lupi Júnior LA. Avanços na imunoterapia para câncer de mama triplo-negativo: eficácia, segurança e biomarcadores preditivos de resposta com anti-PD1 e anti-PDL1. *Braz J Implantol Health Sci*. 2024;6(9):2321-33. <https://doi.org/10.36557/2674-8169.2024v6n9p2321-2333>
- Brasil. Câmara dos Deputados. Projeto de Lei nº 5514, de 2023. Dispõe sobre o acesso gratuito e universal à imunoterapia para pacientes com câncer e dá outras providências [Internet]. Brasília: Câmara dos Deputados; 2023 [cited on Nov. 10, 2025]. Available from: <https://www.camara.leg.br/proposicoesWeb/fichadetramitacao?idProposicao=2403963>
- Ferreira APC. Não adesão ao tratamento: efeitos para a equipe e efeito da equipe [dissertação]. São Paulo: Faculdade de Psicologia, Universidade de São Paulo; 2017.

